



NSFAS

National Student Financial Aid Scheme



NSFAS Outreach - Presentation



Introduction



Hello and Welcome

Outreach Presentation



What is NSFAS? The National Student Financial Aid Scheme? (NSFAS)

The National Student Financial Aid Scheme (**NSFAS**) is a government owned entity under the Department of Higher Education and Training (**DHET**). It is governed by the National Student Financial Aid Scheme Act (**Act 56 of 1999**) and seeks to:

- ✓ Provide financial aid to eligible students at public Technical and Vocational Education and Training (**TVET**) colleges and public universities;
- ✓ Identify eligible students, provide bursaries and collects past student loan repayments;
- ✓ Replenish the funds available for future generations of students; and,
- ✓ Supports access to, and success in, higher education and training for students from poor and working-class families who would otherwise not be able to afford higher learning and training.

Who qualifies for NSFAS funding?

- All South African citizens
- All SASSA grant recipients
- Applicants whose combined household income is not more than **R350 000** per annum
- Persons with disabilities with a combined household income of not more than **R600 000** per annum
- Students who started studying before 2018 and whose household income is not more than **R122 000** per annum

What does the NSFAS Bursary cover?

- Accommodation
- Transport (up to 40k from institution)
- Living allowance
- Book allowance
- Incidental/ personal care allowance
- Registration
- Tuition

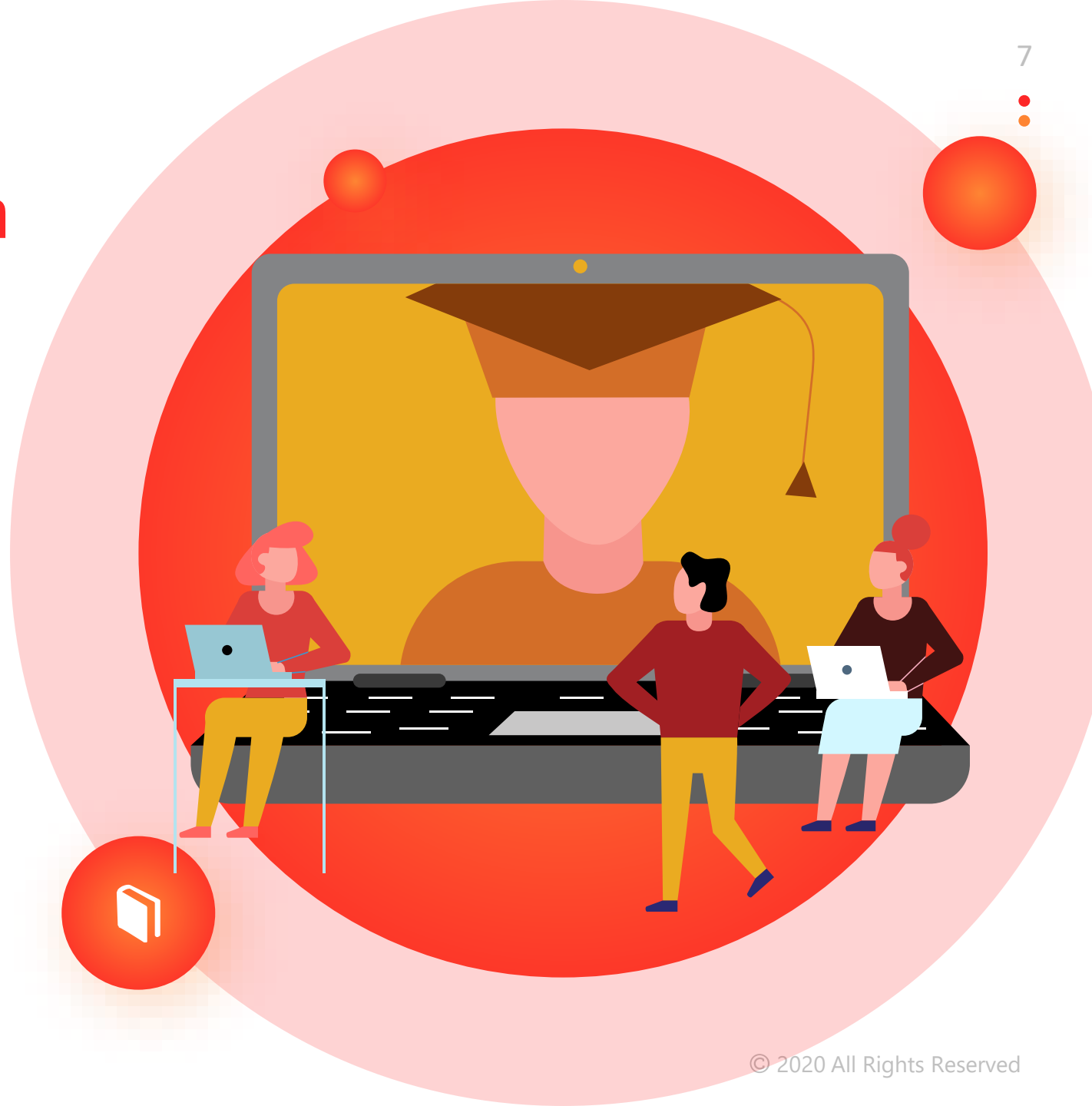


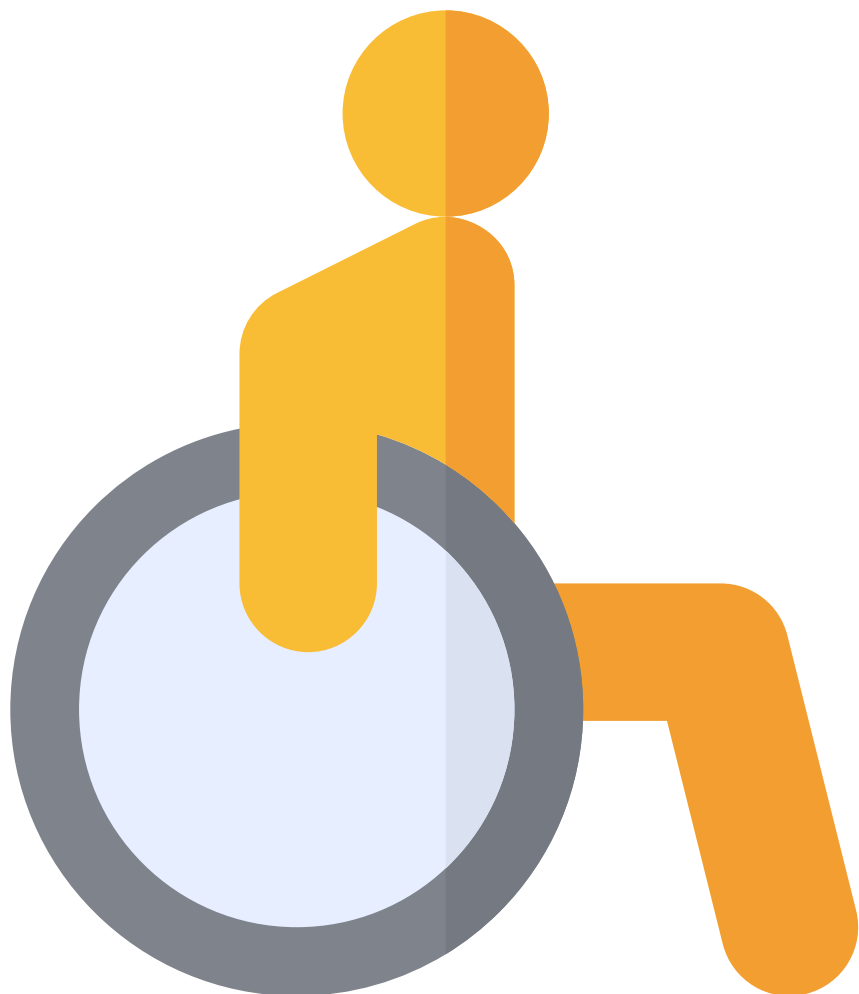
How, where and when can one apply for NSFAS?

The NSFAS applications season is opened by the Minister of Higher Education, Science and Innovation and the opening and closing date is announced nationally well in advance.

Applications are submitted online through the NSFAS website: www.nsfas.org.za.

Applications for the 2020 academic year have closed. 2021 NSFAS application dates will be communicated.





Does the NSFAS bursary offer any additional support for student with disabilities?

Yes, NSFAS further supports funded students with disabilities through an additional allowance that covers:

- **Medical assessment:** limited to one assessment for the duration of the qualification and on request by the Disability Unit/ Student Support
- **Assistive devices:** limited to one assistive device for the duration of study.
- **Human support:** to cover for the cost of a caregiver, guide dog, scribe, tutor or sign language interpreter

NSFAS Outreach

The 2010 Report of the Ministerial Committee :

- Review of the National Student Financial Aid Scheme recommended that NSFAS should improve its approach to stakeholder engagements especially in rural areas.
- NSFAS' Marketing and Communication Services Unit developed an efficient, effective and cost-effective communications strategy targeting prospective NSFAS students through teachers and learners in some 6,000 public high schools across South Africa.
- We participate at career workshops, meetings, conferences and exhibitions. If you would like us to participate in any of your career related events send an email to: outreach@nsfas.org.za



CONTACT US

NSFAS operates from Monday to Friday, **08:30 – 17:00**.

Get in touch with us on:



Address

10 Brodie Road, House
Vincent 2nd Floor, Wynberg,
Cape Town



Toll Free Number Phone

08000 67327



Email

info@nsfas.org.za



Introduction



Thank you